

## The MG Y



MG Y Tourer geschlossen D.G. Models.

MG Y Tourer – closed D.G. Models.

*MG has produced a multitude of models. The problem is that most suppliers only have the MGB or MGA in stock. Luckily some suppliers have the heart to release another model. One of these suppliers is Dave Gilbert*

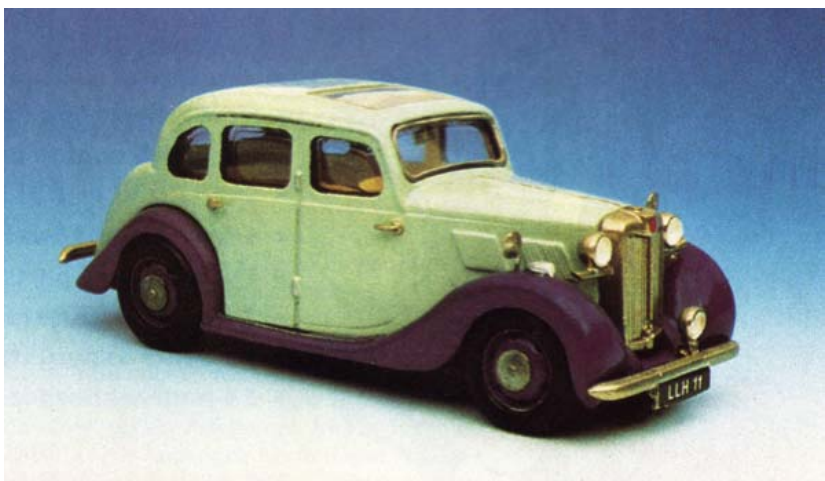
### **By Hubert Leferink Pictures Benjan Spiele**

In the beginning of the seventies Dave Gilbert started his production of replicas of different British “die-cast” models mainly Dinky Toys. Later on Dave Gilbert started to design other classic models in scale 1:43 all styled after the pre-war Dinky Toys. This means the models have no windscreens or interior. The models are very simply made. Most of them are made of two pieces, which are held together by the axles, holding the wheels.

The models have a charisma I like, even if the most important aspect of the Dave Gilbert models is the large variety. The MG Y, which we reviewed in our August 1994 issue, was offered for the first time in 1947. “Only” 6,158 YAs were

built. It is a 4-door saloon with IFS and sliding roof. In 1948 an open version of the YA was offered, the Y-tourer. This model was only produced until 1950 and only 877 units were made. In 1952 this model was modified. The 15-inch wheels were replaced by 16-inch, stronger shocks, and the Panhard rod was replaced by an anti-roll bar. Many parts were

shared with the MG TD. Externally only the rear wings looked different. Dave Gilbert produced models of both types in the beginning of the seventies. The model is marked in the catalogue as built in 1948, so it should be a MG YA. The MG Y-Tourer was made with closed roof. So Dave Gilbert did not make it with an interior. I have been offered

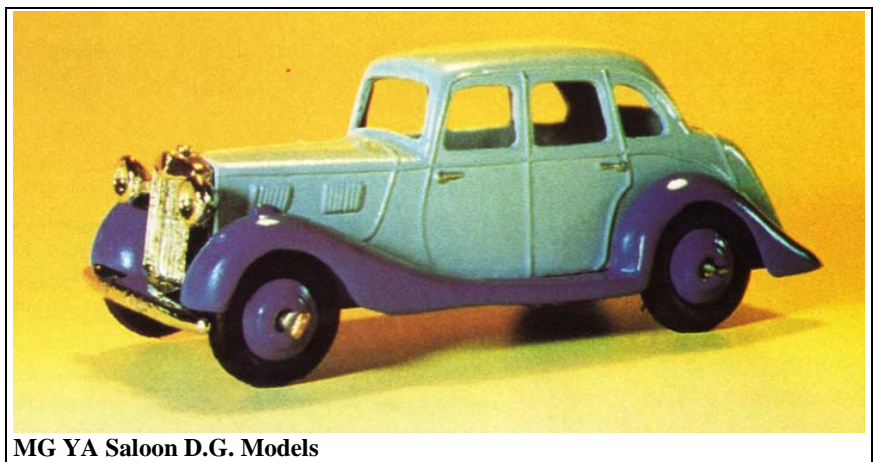


MG Y-Tourer R.A.E. Models



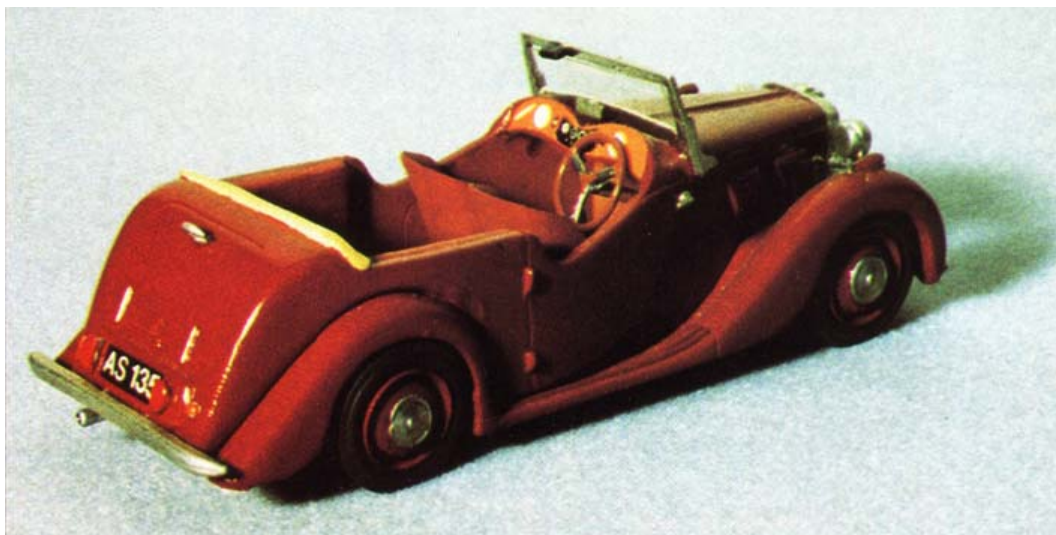
Two MG YA Saloons D.G. Models

Dave Gilbert models from time to time as “Gemini” models. It’s very difficult to find these models nowadays. Luckily RAE Models has for a few years, offered models of the MG Y. But RAE does not specify whether it’s a YA or YB. The model is available with open or closed sliding roof. For the real model maker, who prefers to build the models himself in his favourite colour, kits are available as well. Even the Y-Tourer is now available from RAE with open roof and a nice interior. Prices for these models are about 160,00 DM (80 EUR) for the complete model, or at 60,00 DM (30 EUR) for the kit.



MG YA Saloon D.G. Models

Originally Published in British Car November 1996



MG Y Saloon R.A.E. Models