

THE BANBURY STEAM & VINTAGE VEHICLE RALLY 1995



Where DO you park?

Over the years I have noticed in the local press references to the Banbury Steam Rally, an event held annually at Bloxham in Oxfordshire. However, I have never bothered to go along even though friends have mentioned what a good day out it is.

This year a friend, who owns a 1952 500cc Sunbeam motor bike, suggested that I came along with our 1950 YA, RVW 761. The car had been back on the road since December 1994, following an enforced hibernation of over 9 years three of which were during our ownership.

I was able to get a late entry into the show and the opportunity was taken to arrange a meeting with friends from Bloxham at the Rally.

The Rally is an amazing event, which covers a whole weekend. This

cial vehicles, motorcycles, lawnmowers, ex-military vehicles, cars, a fairground and organ section, model exhibitions, craft fair and a range of events in the main ring all formed part of a huge and diverse programme of transport and rural presentations for all the family. My youngest daughter was very impressed with

the car crushing spectacular – using tanks as the means of crumpling gutted vehicles.

There were over 120 cars grouped in four classes, vintage, post vintage, post war and classic.

The oldest a 1907 Friswell Tourer and the youngest a 1991 Morgan 4/4.

There were several M.G.s – including a TA, TB and TD and TF, a YA and two YBs, an MGA, Magnette and MGB – one of which, Eric Dodd's splendid YB, won the best Classic award.

The final part of the event is a parade of vehicles around the ring with a commentator introducing each car to the crowd.

It really is well worth going to and next year – the 30th Banbury Rally – is to be held on 29th and 30th June 1996. The event is free to participants and that includes 2 adults and 2 children and each entrant receives a memento from the organisers.

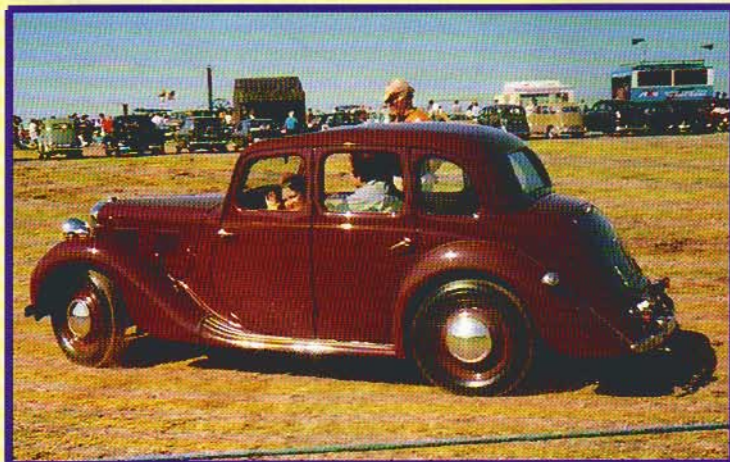


Picnic Time.

Footnote

Rather different from some events, notably at the Gaydon Heritage Centre where there is no incentive from the site operators other than a measly quid off the price of entry (not cheap at £15 plus for a family of four). Perhaps the M.G. Car Club should take up the matter with the Museum – when I phoned up last year I was told that the possibility of differential pricing was to be seriously considered (because of the complaints that had been received from other clubs) as it was understood that not everyone wishes to see the Museum on each time of entry to the ground.

JERRY BIRKBECK



On the Move.

was the 29th occasion that the Banbury Steam Society have organised what has now become a big occasion. Although the primary interest are the steam engines (agricultural engines, tractors, showman's engines, road locomotives, portable engines and others are all represented), commer-

A YA convertible built out of a "scrapper", seen on this year's "Wings Run".

