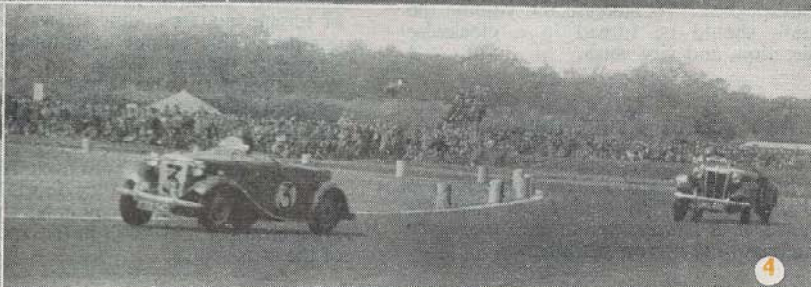
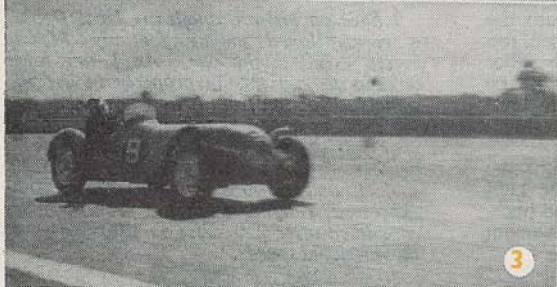


Production Cars at SILVERSTONE



M.G.s AND RILEYS AT THE DAILY EXPRESS MEETING. 1. R. W. Jacobs (M.G. 1½ litre), winner of the up to 1500 c.c. Class in the Touring Car Race. (Photo AUTOSPORT.) 2. J. K. T. Line holds his M.G. "TD" close to the white line on Becketts Corner. (Photo J. Brymer.) 3. G. A. Ruddock (Lester M.G.) on Club Corner. (Photo P. Simpson.) 4. Ted Lund (M.G. "TD") leading J. K. T. Line (M.G. "TD") round Becketts Corner in the Production Sports Car Race. (Photo J. Brymer.) 5. A. P. Warren (Riley 2½ litre) immediately before the assembly for the start of the Touring Car Race. (Photo P. Simpson.) 6. A. P. O. Rogers (Riley 2½ litre) on Copse Corner on his tenth lap in the Touring Car Race. (Photo J. Brymer.)