

THE CLASSIC 'Y'

The Newsletter of the M.G. 'Y' Type Register.
Volume 16. No.120. December 1993.



Frank Vautier's famous supercharged YA (Y7171) at Aintres on 25th September.

A VERY HAPPY CHRISTMAS & NEW YEAR TO ALL READERS

Newsletter Editor/Registrar: J.G.Lawson, [REDACTED]
 U.K. Spares Secretary (new spares): A.Brier, [REDACTED], York, [REDACTED]
 U.K. Spares Co-ordinator (second-hand spares): D.Mullen, [REDACTED]
 The Australian Y-Type Register: A.L.Slattery, [REDACTED] Queensland, [REDACTED] Australia.
 The M.G. 'Y' Type Register of South Africa: E.R.Laurence, [REDACTED] Republic of South Africa.
 M.G. Y Register Denmark: F.Neumann, [REDACTED] Denmark.

'The Classic Y' is published by Skycol Publications.

The content of the articles and the technical advice appearing in this magazine represent the views of the respective contributors and not necessarily those of the editor or of the publishers. The MGYR cannot be held responsible for any loss or damage resulting from the implementation of any advice appearing in this magazine.

Register Movements

I heard from Tony Slattery of the Australian "branch" recently and, amazingly, he has come up with no less than another 26 "new" cars not previously known to us. Briefly, these are:

0033.	Y0516	SC/X10277	0308.	Y0636	SC/X10395
0566.	Y1092	SC/X10878	0596.	Y1199	SC/X11004
0597.	Y1226	SC/X10970	0325.	Y1464	SC/X11328
0622.	Y1551	SC/X11339	0623.	Y1681	SC/X11294
0625.	Y2052	SC/X11828	0626.	Y2413	SC/X12278
0330.	Y/T/EXR 2817	TR/12653	0382.	Y3130	SC/X12875
0657.	Y3186		0797.	Y3204	SC/X13115
0384.	Y3312	SC/X13056	0801.	Y3349	SC/X13218
0656.	Y/T/EXR 3429		0816.	Y3611	SC/X13224
0817.	Y3663	SC/X10506	0904.	Y3842	SC/X13731
0385.	Y4460	SC/X14215	0697.	Y4595	SC/X14393
0383.	Y/T/EXR 4971	TR/14851	0926.	Y6004	SC/X15910
0927.	Y6448	SC/X16168	0928.	Y6546	

Two cars recently surfaced after a very long "absence". Y2934 (Register No.730, and registered "UMG3") was last heard of in January 1982 in [REDACTED], Devon, where a two-year re-build had just been completed. At that time it was maroon with a beige interior. It has recently been purchased by Stephen Edwards of North Wales who says it is in "Class 1 condition"; but it is now black with a red interior. Next, a report from Norway by Asbjørn Johannessen brought to light Y1877 (which was last seen on the cover of "Safety Fast" for February 1976) and Y1538 (a "NEW DISCOVERY"). These 1948 YAs are Register Nos. 1045 and 328 respectively.

Two "Y" Types were recently on the move across North America. Jerry Ticknor of Michigan sold his left-hand-drive YA (Y5174EXLU) to Roy Jacobson of Massachusetts who is the Competition Chairman for the N.E.M.G.T.R. After a swift mechanical rebuild, this rare "Y" is now on the road again. Going in the same direction, but a bit further, was Y/T/EX(U) 3254 which left British Columbia (Canada) for its new home with Mr.R.H.Cobb of Maine.

Finally, a "NEW DISCOVERY" in the Republic of Ireland (I think!). Y6604 (allocated Register No.1086) is reported by Dave Mullen as belonging to Mr.Brendan O'Hara of [REDACTED], Dublin. However, I notice we also have an entry for Y6640 in County Dublin. A mis-reading, perhaps? Well, maybe, but Y6604 is registered "ZE9527" and '6640 is registered "ZE9351" - so maybe they are two different cars after all!



Cars Worth Keeping

MG YB

When it was finally back on the road, Philip Reckless had spent £1683.45 on restoring his 1952 MG saloon

It was more than two years ago (June, 1979) that we last featured the 1952 MG YB saloon of Philip Reckless, of Ludlow, Shropshire.

He had run his car (which had two previous owners, one of which had tuned the engine to MG TD standards with twin carburettors) for several months and some 2000 miles during the summer before, having coaxed it back to life after freeing off rusted cylinder bores, replaced rotted brake pipes, etc.

In the autumn, he commenced a lengthy restoration process, pausing briefly for Christmas...

Once the festive season was over, I got back to work. With the sills completed I decided that it would be better to start at the back of the vehicle and work forwards. First, I jacked the body about a foot clear of the chassis, but still leaving the front of the bulkhead bolted to the chassis brackets.

With that accomplished, I started jacking the chassis up as high as the body would allow to the ceiling. It was then lowered onto

a firm set of ramps, the idea being to remove the back axle and the rear suspension, check all seals and replace bolts and perished rubbers, remove road dirt, de-rust and paint in the original colour — black.

The brake shoes were OK (as were the seals), so I cleaned and refitted them to the repainted black plates. The back axle was perfect, needing nothing more than a clean.

De-rusting the chassis was not so easy. It needed hard work and plenty of elbow grease with 'Jenolite' but, fortunately, it was only surface rust. With the chassis finished, from the gearbox right through to the rear, I refitted the axle, propshaft, springs and petrol tank. For once I was overcome by satisfaction, another 12 months of this, barring delays, and I should be home and dry (or so I thought! at the time).

pipe work

I then concentrated my efforts at the front of the car, that is from the rear of the gearbox forward. As the pipes from the petrol tank to the engine, and the pipes for the brakes, were still attached to the chassis by string (tied round the appropriate strategic points, these had to be removed before I could get to the inner chassis near the engine. Accordingly, I removed the brake pipes — easy because I had assembled new pipes to the car the previous spring. The petrol pipe was very awkward, especially near the bulkhead where there wasn't any room to manoeuvre the pipe out of the way, so I left it until a later date when the engine was removed.

I started with the front suspension, by first disconnecting the front brake pipes from the wheel hubs. Next, I removed the bolts to the swivel pins, shock absorber and wishbone plate. On dismantling the wishbone, I found to my horror that, on the nearside, the coil spring had fractured at the base. This

was not visible when the car was being used. On closer examination I realised that the spring had been in this state for some time, as the break was old and dirty.

Fortunately, I was able to purchase two new springs from my supplier, who responded to my pleas for help in double quick time. Full marks to Motobuild of Hounslow. It is advisable to fit the coil springs in pairs as, after such a long time, the originals will have reduced in strength. On mine, the reduction was nearly 3/4 in.

While waiting for the correct parts to arrive, I removed the engine. The gearbox was taken out first, then the engine. I engaged my father for help with a log and rope. We both lifted the engine, which weighed over three hundredweight, but fortunately it proved to be an easy task. With the power unit out of the way dismantling the pipes and parts around the engine was easy. The chassis was then derusted and painted completely.

Brian Poole, a motor factor in Kidderminster, reconditioned my two front shock absorbers and, at the same time, shot blasted and painted them black.

I removed the swivel pins with wheel hubs from the car and, when I took the top and bottom swivel pins apart, I found there was very little wear to the swivel pin threads so, after cleaning everything, I painted it all and re-fitted them to the front suspension. What had been replaced was wishbone arms, coil springs, all rubber joints and bushes and, most important, was the renewal of all bolts, where possible.

All the chrome, which I had taken off the car gradually during the dismantling period, was collected together and was then taken to Sports and Vintage Motors, at Shrewsbury, for rechroming. I received a quotation for £160 covering the total which amounted to 55 items including radiator grill surround, slats, side light bodies, rear bumper, door shut plates and head lamp brackets with odds and ends. In the event, the final cost was £130, which I considered to be very good value.

Three items were missing — the 'D' lamps, which were being done at a later date. The work was well done in my opinion.

The steering rack was taken off and cleaned up; the gaiters were perfectly sound but I replaced the clips.

Cleaning the caked mud and grease off the front of the car, I had got myself very dirty and 'smelly' but, on reassembly of the painted parts, it was smashing to come away with almost clean hands. The most satisfying part of the rebuild was to see the shine on the reassembled parts.

Having replaced all the front suspension, the rack and pinion steering and anti-roll bar, I renewed the brake wheel cylinder rubbers and derusted the back plates, painted and replaced them. I also renewed the inner wheel oil seal.

At Easter, I was unable to spray the body because of the cold weather, so I took the radiator to a local specialist for reconditioning. This radiator was very grubby and it leaked where the previous owner had fitted a water temperature gauge plug. The repairer agreed to clean up the plug and braze the seam from which the leak was coming.

All pipes were replaced to the chassis during this period; these were mostly brass which made them easy to clean. The brake pipes were renewed previously so they were cleaned and painted.

While working on the chassis, I had asked

the old loom, I made sure that the new one had the original colour code, that is to say, the colours were as the wiring diagram in the handbook. Everything was correct, so I derusted the bulkhead and battery box and sprayed three undercoats and four top coats, again rubbing down between each coat. This was left for a week for the paint to harden before all the electrical parts (which, in the meantime, had been reconditioned) were put back on the bulkhead.

As the engine had been overhauled previously I set about cleaning it and I decided that, as the engine and gearbox together weigh 3cwt, it would be easier to take as much as possible off the engine to make it manageable to lift. Even so, with the head off and all the accessories, it still weighed a hefty 1½cwt.

One day was needed to put in the engine and gearbox with the help of a friend and my father. Had it not been for this occasional help, I would not have managed all the lifting and holding.

In order to put the engine into the chassis, the body had to be moved back a foot to allow the bellhousing at the rear of the cylinder block to clear the lower bulkhead which, by this time, had been painted.

New mountings were used under the engine and gearbox. All the rubbers that I

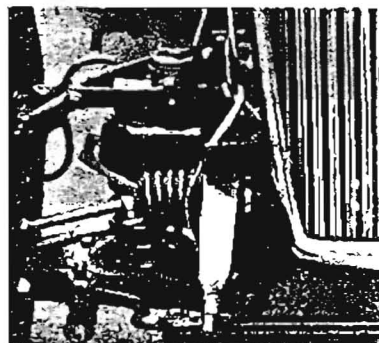
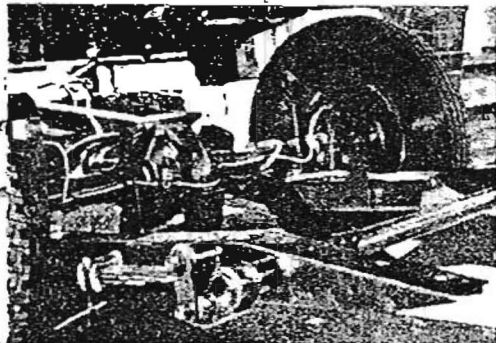
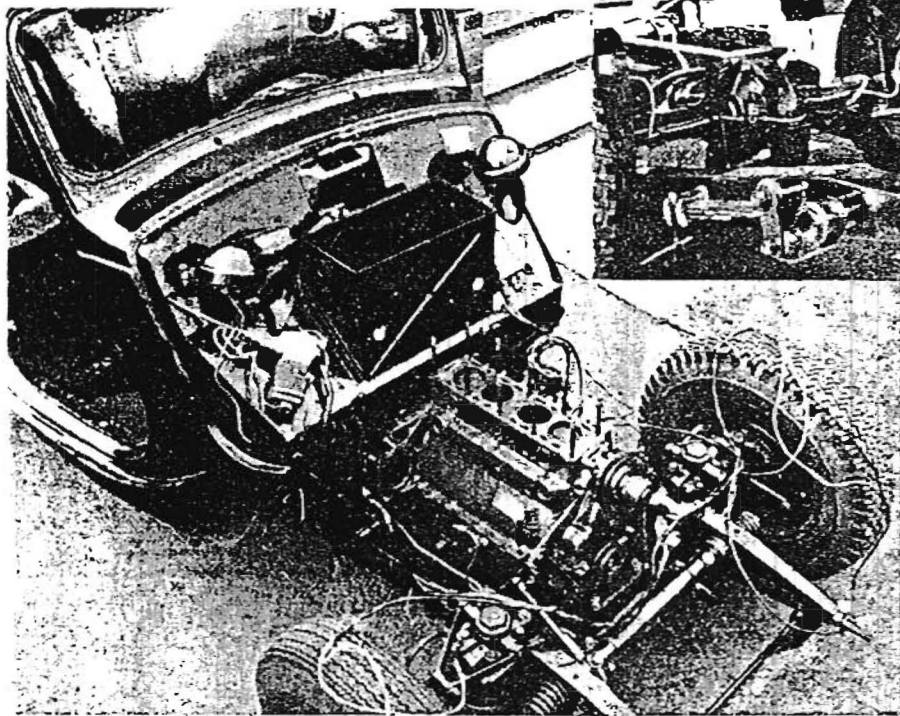
cylinder head with the single carburettor which, incidentally, had been cleaned and fitted with new seals.

The starter and dynamo were in a very good serviceable state, needing only a clean and paint. I had renewed the brushes in the dynamo the previous year, so these were okay. The starter brushes were also good.

All the equipment was on the engine as original when new in 1952 — a pleasing sight, the engine was red and the rest of the car was black.

The wiring loom was fitted round the engine bay on top of the front crossmember and chassis sides. These wires were connecting the dynamo, coil, distributor, fog lamp, side and head lamps. The first three items were connected up but the latter were left until I put the front wings on the car.

Brake pedals needed to be replaced next and what a difficult job it turned out to be. Having to operate in a confined space, knocking the pedal shaft into the pedal box proved time consuming. I spent a full day on just this operation, which included connecting the clutch rods and cable to the side of the sump, fitting the master cylinder and stop-light switch, plus various springs which had broken. The stop-light switch was found in a very sorry state, having been



Front suspension renovations included replacing the front coil springs, one of which was found to be broken, although the car had been running on it before the rebuild. The engine was repainted MG red

repaired previously with Araldite.

Other jobs done at this time included bleeding the brakes, re-fitting the steering wheel and connecting up the indicator and horn switches to the new wiring loom and fitting a new exhaust system, made to the original design by NTG Motor Services, Ipswich.

Next, I sprayed and completed the main body — a total of 30 coats of paint now protected this structure. Once the body had been sprayed I started spraying the various body panels, as it is best to spray the small panels off the car before fitting later, the advantages being that they are easier to handle and there is less risk of overspraying other pieces.

One evening was spent reassembling the 22 grille slats to the radiator surround. This job is easier said than done — difficulty was experienced starting the slats on the metal supports but, once I had fixed the two end and two inner pieces, final assembly was easier.

Having just received the radiator from the repairers I fitted it on complete with the radiator surround and grille. I then fitted the new top and bottom hoses to complete the engine.

As the chassis was completed, all that was required was for the body shell to be dropped onto the chassis and bolted down, with padding between the fixture points — every MG, at the time of manufacture (before the MGB) had pads between all possible metal to metal contact points, especially on all bolt fixture mounts.

Hydraulic jack and brake pipes were fitted — I made up some brackets to hold the pipes and wiring loom to the chassis.

several friends if they knew of any person who would re-veneer my dash, which had been removed completely. This constant asking seems had the desired effect because I was told of a music shop in Ludlow which restores pianos and, when I approached them, they were glad to do the job, subject to the availability of the walnut veneer, which they obtained soon after.

Also, at this time, a friend's sister had just started up in business as upholsterer. The two front seats were duly shown to her and, again, the work was undertaken subject to the leather being available from Connollys.

During a burst of summer weather, I again made an attempt to spray the body. I managed to spray three undercoats, with rubbing down in between each application, before the rain clouds burst and, for three weeks, I was unable to paint anything apart from one good day, when I had fetched everything off the bulkhead with a view to spraying later.

The old wiring loom was replaced and a new one substituted but, before I removed

replaced were coated with Finnigans 'Waxoyl' which, besides being a rust-proofing agent, should protect the rubber from perishing.

With the power unit in the chassis I set about cleaning the cylinder head prior to fitting new seals on the valve stems. When I ran the car previously I found that my oil consumption was about 350 miles per pint, normal consumption being 500 miles per pint. Wear in the piston bores was negligible but, as I hadn't decoked the cylinder head, I presumed the rubbers on the valve stems were worn or missing. I found out later that this was the case.

The finished head, newly decoked and painted MG red, was then put onto the engine, all new gaskets being fitted where appropriate.

Having acquired the original manifold from the previous owner I had, in the meantime, had it enamelled by Sports and Vintage Motors Ltd at Shrewsbury, the same people who did all my rechroming.

The manifold was duly fixed to the

continued over page

Cars Worth Keeping continued

Mr. C. Dye of Pagham, Sussex, had an interior light switch and four secondhand overriders which needed rechroming. The switch was fitted to the car and the overriders were sent off for rechroming at Sports and Vintage Motors.

The original wooden floor boards had rotted round the edges, so I approached a local woodyard to make replacements in 1/2in plywood, cut to the original size and this was done, although final shaping was required by me to fit. Both the propshaft and gearbox covers had to be fitted before I could bolt down the new floor, using countersunk bolt screws with wing nuts underneath. This was to help in quicker removal at any time in the future. Incidentally, the handbrake lever and brake cables were fitted, as was the speedo cable. Once the floor was completed an inspection hole was made for the brake master cylinder fluid reservoir, which is situated below the driver's feet on the side of the chassis, as on the Morris 1000.

Carpets were bought from Edgware Motor Accessories, London, and were duly cut and fitted, seat runners were fixed plus the odd missing bits such as rear blind, ashtrays and sun-visors. The seats were ready for collection the following week and were fitted to the car.

Rear quarter light windows were fitted with new window channelling.

Rear seats, rear panels and window blind were fitted to the car, trafficators and door jamb panels were also fitted.

My number plates were in a very sorry state so I carefully removed the numerals from the plates and repaired the broken

Sunroof drain pipes were renewed at the front of the roof down between the windscreen and the front door. This job consisted of pushing through 1/2in rubber pipe straight down to an opening in the sill and out through to the underside of the car. The same was done to the rear of the vehicle but this entails taking off the interior roof headlining, a difficult task.

A week of stormy weather put a stop to almost everything on the car, so I decided to prepare the headlights for respraying. Some early YBs had completely chromed units. Others (like mine) had chromed rims and painted lamp bodies the same colour as the car. I had new chrome rims which had been fitted by the previous owner, the old ones having rusted. The headlights were stripped of all paint and de-rusted ready for a fine day for spraying.

My fog lamp (pass light) was found originally in the spare wheel compartment, complete but for a damaged rim. The chrome was excellent. Lucas were called upon to supply the original type which they did. I am pleased to say. Clips holding the light glass and reflector to the rim were replaced.

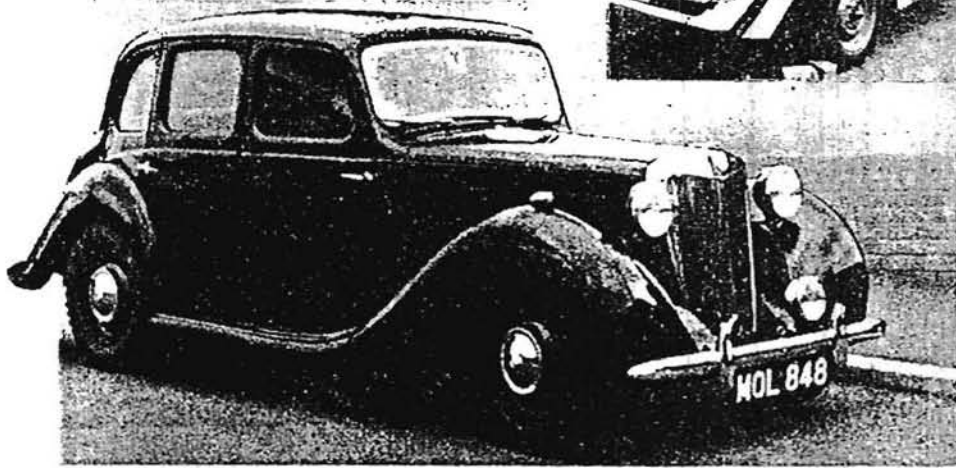
The door jam hinges needed to be

one tail light. This set-up is within the requirements of the DoE test.

Now that all the car lamps were completed, the rest of the wiring loom was fitted to include remaining electrical appliances.

The spare wheel compartment lid needed to be derusted and welded, especially along the bottom edges, as the lip had rotted away. This was done successfully with a large amount of effort and patience (incidentally, this panel holds the number plate and rear 'D' type lamps). At the same time, work commenced on the boot lid as the bottom had rotted around the hinge brackets. This was a more complicated job which dragged on for a long period. I had purchased some new boot hinges from NTG of Ipswich, who have started remanufacturing most chrome parts for the Y-type saloons. My original ones had pitted from underneath the chrome.

I recommenced work on all the body panels not yet sprayed and these were completed during a spell of warm spring weather. Casual observers said, at the time, that it seemed as if, one minute, the car was in pieces and the next instant everything was fitted to the vehicle complete! Once the panels were sprayed, fitting was soon completed. Originally, the car was painted with 16 coats at the factory but I've



three letters with 'Araldite' and resprayed them with white paint. Now I was stuck with bent plates but new ones were cut from some scrap alloy sheet, using the old plates as a template. I marked out the numeral holes and drilled. All that was required then was some black paint and lit MOL848 to them; the cost was about a pound. New ones as original are nearly £18.

Wing piping was fitted between the chassis and the inner wings, the toeboard was positioned correctly and bolted down, the dipswitch was also fitted and connected to the terminals on the wiring loom.

My petrol pipe spout catch was broken. The cap is of the 'lick' or 'pop up' type, activated by a lever on the side of the spout. This in turn releases the spring fixed to the underside of the petrol cap and so pops up the cap. In my case, the lever was missing and the brass spindle was broken. I used 16 gauge steel for a bracket, suitably shaped and welded to the spout. Another lever was acquired and fitted. Fitting was delayed until the rear wings were ready for bolting to the body. The accelerator pedal was fitted to the toeboard and the cable connected to the carburettor.

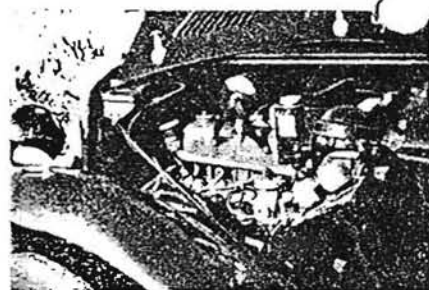
replaced. These were easy as they had been marked previously, to fit the original mounts.

Next, the windscreen was fitted to the car. This was held by two hinge bolts at the top of the windscreen aperture. The bottom was connected to the winding chain. It is the opening type and because of this, a screen-washer was not required when I submitted the car for its vehicle test. Screen washers need not be fitted, as the regulations state that only fixed screens require windscreen washers.

The main dash panel and dash rail were fixed to the bulkhead, together with the windscreen wiper mechanism. New black beading was made to fit between the dash rail and the windscreen aperture, to ensure that a good seal helped to create a draught-proof and rainproof windscreen.

The soundproof panel was fitted to the underside of the bulkhead, to complete this part of the car.

My rear 'D' type lamps were ready for collection and one evening was spent assembling the lamps. The lighting for the YB at the rear is — nearside: one reverse and one tail light; on the offside: one stop and



Philip Reckless gave his MG YB an even more thorough paint covering than the factory, with 30 coats (half of them undercoats) for the body. Each coat was rubbed down before the next was applied

protected my car as follows: wings, front and rear, have 20 coats (half undercoat and half topcoat); doors have 20; bootlid, spare wheel lid and bonnet have 18 coats; the body shell has 30 coats.

I experienced very little trouble fitting the wing panels. The front ones were quite easy to line up with the other panels, once the headlamp bar and brackets were fitted through the radiator surround to the wing brackets each side of the radiator.

Front bumper, overriders, bumper irons, number plate and pass light were fitted to complete the front of the car.

Moving to the rear of the vehicle, I set about finishing the boot compartment. The floor is half wood and half metal. I had replaced the wood and the metal was derusted and painted. The same applies to the spare wheel compartment. Side boot panels were cleaned and refitted. I ordered rubber matting from Edgware Motor Accessories, London and, on receiving it, I cut this to line the boot floor in place of the original, now badly cracked, lino.

My wheels were rubbed down carefully and derusted. With seven coats of paint they should keep their appearance for some years.

Doors were fixed to the hinges and these made an excellent fit, especially as the tolerances were a tight fit between the doors and door openings. The door windows and winding mechanisms had been fitted some time previously, having been laid-up in the shed until final assembly.

The boot lid required knocking into shape after welding and this was done before sanding down and painting. Badges and hinges had to wait until the paint had

Cars Worth Keeping

hardened. The same applied to the spare wheel cover, which needed welding and painting. The welding having been completed previously, the painting was easy as the panel is quite small. Then I fitted number plate and 'D' lamps to the cover.

Once the electrical wires had been connected to the main loom at the back of the instrument panel I fitted the battery to the car after charging it twenty four hours previously. A friend stood by with a fire extinguisher prior to starting the car for the

first time since I commenced the restoration. I turned the key and pulled the starter with the choke pulled out halfway and it fired first time. Unfortunately, it didn't run like previously but was mis-firing. The plugs were changed and this made all the difference — needless to say my friend didn't require the fire extinguisher!

My road tax duty was duly paid and I ran 'Molly', as she is affectionately christened out onto the road, 22 months after starting the restoration.

To sum up, I can now say that I was anxious to start the rebuild as I had not

tackled one before, but had mechanical experience. My frame of mind was that the restoration was to be done properly, meticulously, job by job and stage by stage. I was highly enthusiastic but, as time progressed, after the first year, things got frustrating either from the lack of available parts or finding that I had not ordered parts in time to complete a particular job.

On the whole I found it a rewarding experience. One reason that kept me going was a sense of duty to the builders of this fine car and it has made me an enthusiastic MG owner.

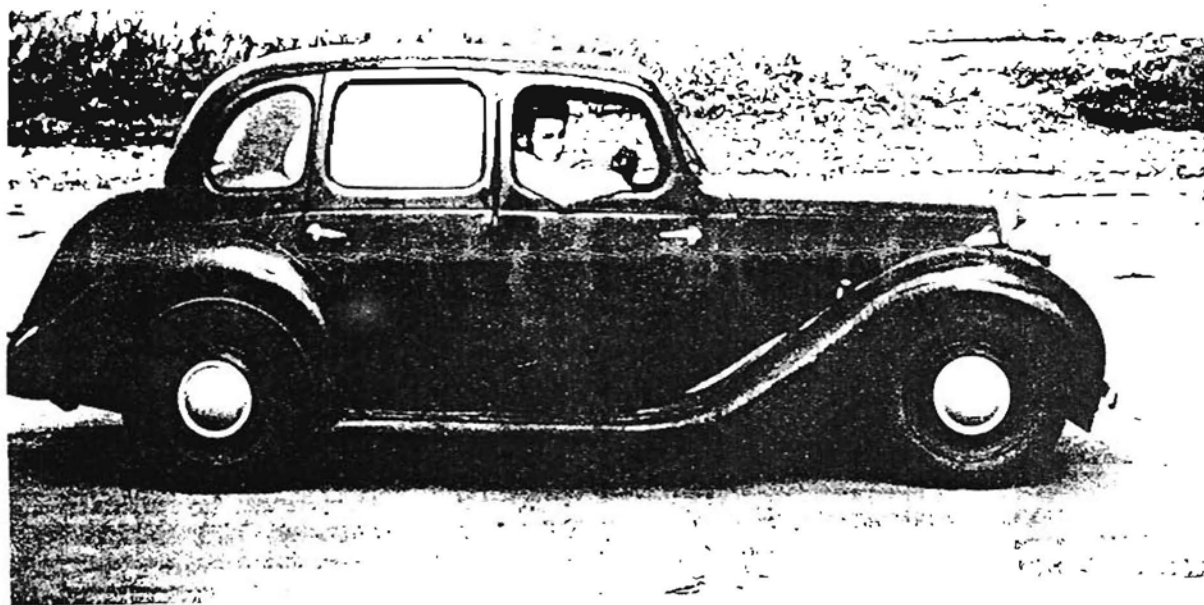
48

Practical Motorist

reproduced by kind permission of

CARS FOR SALE:

1123. "1952 YB. YB0640. XPAG/SC/17538. MG6207/467. "UMG804". Maroon with Tan (light brown) interior. With current owner for last 25 years. Originally supplied by University Motors. All original documentation present, including all original handbooks and brochures. The car has not been run for 10 years (and has been dry-stored for 15 years), but a brand new "Gold Seal" engine was fitted, though never used, and turns over perfectly. Wood, leather and chrome in good condition. Only rust present is around spare wheel compartment. Replacement panel purchased for this area from N.T.G. together with £500-worth of other parts (rubber seals, fuel pump etc.), which have never been fitted. Mileage (on old engine) is 76,000. Offers in the region of £2,400 to: Mr.C.R.Deards, [REDACTED], Somerset, [REDACTED]. Tel: [REDACTED]."



Another shot of Nick Murray (see TCY119), this time with his own first "Y" Type, in 1962/3.

(photo via David Mullen)

Continuing our year-by-year review of cars currently on the Register, this time its the turn of the 1948 cars....

1948

Y 1168	Victoria	Australia	
Y 1174	Victoria	Australia	
Y 1175	Victoria	Australia	
Y 1184	Victoria	Australia	
Y 1199	Victoria	Australia	
Y 1209	Essex	England	
Y 1221	Victoria	Australia	
Y 1226	Victoria	Australia	
Y 1279	Victoria	Australia	
Y 1280	?	Australia	
Y 1292	Victoria	Australia	
Y 1298	Western Cape	RSA	
Y 1302	British Columbia	Canada	
Y 1307	NSW	Australia	
Y 1314	Dorset	England	
Y 1327	Co.Down	NI	
Y 1336	Ontario	Canada	
Y 1366RC	Lichtensteig	Switzerland	Reinbolt & Christé bodywork
Y 1367RC	?	Switzerland	" " "
Y 1380RC	?	Switzerland	" " "
Y 1389	Wiltshire	England	
Y 1429	Dunedin	NZ	
Y 1441	Dunedin	NZ	
Y 1442	Christchurch	NZ	
Y 1443	Victoria	Australia	
Y 1464	ACT	Australia	
Y 1467	Suffolk	England	
Y 1468	Funchal	Madeira	
Y 1469	?	England	
Y 1488	Victoria	Australia	
Y 1505	Devon	England	
Y 1507	?	England	
Y 1508	Cheshire	England	
Y 1535	Victoria	Australia	
Y 1538	?	Norway	
Y 1551	NSW	Australia	
Y 1552	Victoria	Australia	
Y 1568	Victoria	Australia	
Y 1586	?	England	
Y 1592	NSW	Australia	
Y 1609	Yorkshire	England	
Y 1633	Durban	RSA	
Y 1634	Somerset	England	
Y 1637	Oberegg	Switzerland	
Y 1641	Victoria	Australia	
Y 1662	Sussex	England	
Y 1674	Westville	RSA	
Y 1681	Queensland	Australia	
Y 1713	Dunedin	NZ	
Y 1741	?	?	
Y 1753	Victoria	Australia	
Y 1775	Avon	England	

Y 1782	Victoria	Australia	
Y 1800	Victoria	Australia	
Y 1804	California	USA	
Y 1805	California	USA	
Y 1812	Surrey	England	
Y 1836	Sir Lowry's Pass	RSA	
Y 1851	W.Australia	Australia	
Y 1855	Victoria	Australia	
Y 1877	?	Norway	
Y 1878	?	?	
Y 1901	?	RSA	
Y 1924T	N.Holland	Neth	thought to be a Y/T/EX(U)
Y 1929	Dorset	England	
Y 1932	Victoria	Australia	
Y 1934	Pretoria	RSA	
Y 1935	NSW	Australia	
Y 1946	Pretoria	RSA	
Y 1948	Victoria	Australia	
Y 1951	-	Hong Kong	
Y 1954	Pretoria	RSA	
Y 1958	Pretoria	RSA	
Y 1959	Pretoria	RSA	
Y 1964		Cyprus	
Y 1966	Florida	USA	
Y 1970	Suffolk	England	
Y 1974	Pretoria	RSA	
Y 1978	Victoria	Australia	
Y 1985	Victoria	Australia	
Y 2005	Victoria	Australia	
Y 2007	W.Australia	Australia	
Y 2011	?	?	
Y 2019	Johannesburg	RSA	
Y 2031T	New York	USA	Y/T/EX(U)
Y 2052	Queensland	Australia	
Y 2056	Natal	RSA	
Y 2057	Bedfordview	RSA	
Y 2063	Johannesburg	RSA	
Y 2074	Natal	RSA	
Y 2094	?	?	
Y 2122	Glamorgan	Wales	
Y 2137T	-	Singapore	
Y 2172T	Natal	RSA	
Y 2193	WA	Australia	
Y 2194	Delft	Neth	
Y 2198	Lincolnshire	England	

YTs '2137 and '2172 are thought to be Y/T/EXRs.