

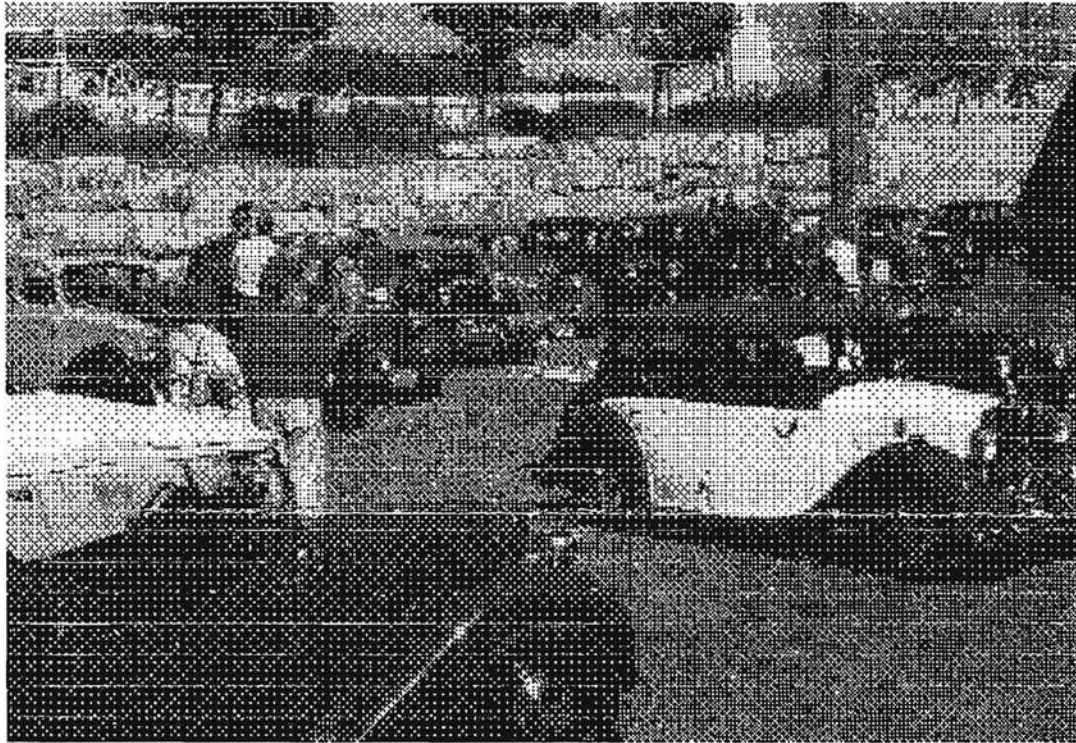
# The Classic 'Y'



*Issue No.144 June 1998*

The Newsletter of The M.G. "Y" Type Register

---



*Fifteen "Y" Types can be seen in this photo of the gathering which took place at Binghampton, New York, last September.*

---

Newsletter Editor/Registrar: J.G.Lawson, [REDACTED]

U.K. Spares Secretary (New Spares): A.Brier, [REDACTED]

U.K. Spares Co-ordinator (Second-hand Spares): D.Mullen, [REDACTED]

The Classic "Y" is published by Skycol Publications

# *Let there be*

# **'Y's**

**M.G. One and a Quarter Litre  
'Y' Series Saloons and Tourers -  
originality and authenticity**

***David R. Lawrence***

At last it's done, printed and finished! Dave is currently working on worldwide marketing and distribution arrangements for the book; meanwhile, we can announce the following details of prices:

**Signed & Numbered (limited to 50 copies): £42.00**

**Signed only: £40.00**

**Unsigned: £38.50**

The above prices are exclusive of postage & packing. By the time the next issue of "TCY" appears, distribution arrangements should be in place and many copies should have found their way into the hands of enthusiastic "Y" Type owners everywhere. It will have been worth the wait, believe me!

---

## WANTED

050598: YA brake master cylinder. Contact: [REDACTED],  
[REDACTED]

## FOR SALE

230498: "1951 YA part-restored. Contact [REDACTED]

180598: "Maintenance Manual & Instruction Book (Workshop Manual) for M.G. One and a Quarter Litre Series 'Y' (incl. Y/T Supplement). The spine of the outer cover is in poor condition, but the front/back covers are in good condition and the actual pages inside are excellent, except for the front index page which has grease marks. Offers to [REDACTED],  
[REDACTED]"

GUARANTEE PLATE ISSUE LEDGERS

THE YBs - Pt.X.

Chassis No.	Engine No.	Completion Date	Chassis No.	Engine No.	Completion Date
YB/0999	SC2/17853		YB/1047	SC2/17955	12/01/53
YB/1000	SC2/17887		YB/1048	SC2/17920	12/01/53
YB/1001	SC2/17895		YB/1049	SC2/17937	12/01/53
YB/1002	SC2/17886		YB/1050	SC2/17921	15/01/53
YB/1003	SC2/17893		YB/1051	SC2/17941	15/01/53
YB/1004	SC2/17884		YB/1052	SC2/17940	15/01/53
YB/1005	SC2/17896		YB/1053	SC2/17919	15/01/53
YB/1006	SC2/17892		YB/1054	SC2/17918	15/01/53
YB/1007	SC2/17894		YB/1055	SC2/17911	15/01/53
YB/1008	SC2/17906		YB/1056	SC2/17947	15/01/53
YB/1009	SC2/17885		YB/1057	SC2/17949	15/01/53
YB/1010	SC2/17903		YB/1058	SC2/17912	19/01/53
YB/1011	SC2/17904		YB/1059	SC2/17944	19/01/53
YB/1012	SC2/17901		YB/1060	SC2/17942	19/01/53
YB/1013	SC2/17899	02/01/53	YB/1061	SC2/17946	19/01/53
YB/1014	SC2/17900	02/01/53	YB/1062	SC2/17945	19/01/53
YB/1015	SC2/17802	02/01/53	YB/1063	SC2/17950	19/01/53
YB/1016	SC2/17902	02/01/53	YB/1064	SC2/17954	19/01/53
YB/1017	SC2/17905	02/01/53	YB/1065	SC2/17943	19/01/53
YB/1018	SC2/17898	02/01/53	YB/1066	SC2/17956	20/01/53
YB/1019	SC2/17897	02/01/53	YB/1067	SC2/17952	20/01/53
YB/1020	SC2/17890	02/01/53	YB/1068	SC2/17948	20/01/53
YB/1021	SC2/17882	02/01/53	YB/1069	SC2/17951	20/01/53
YB/1022	SC2/17924	05/01/53	YB/1070	SC2/17953	20/01/53
YB/1023	SC2/17908	05/01/53	YB/1071	SC2/17958	20/01/53
YB/1024	SC2/17926	05/01/53	YB/1072	SC2/17970	20/01/53
YB/1025	SC2/17925	05/01/53	YB/1073	SC2/17971	20/01/53
YB/1026	SC2/17909	05/01/53	YB/1074	SC2/17969	22/01/53
YB/1027	SC2/17923	05/01/53	YB/1075	SC2/17982	22/01/53
YB/1028	SC2/17922	05/01/53	YB/1076	SC2/17965	22/01/53
YB/1029	SC2/17910	05/01/53	YB/1077	SC2/17967	22/01/53
YB/1030	SC2/17907	07/01/53	YB/1078	SC2/17968	27/01/53
YB/1031	SC2/17927	07/01/53	YB/1079	SC2/17913	27/01/53
YB/1032	SC2/17930	07/01/53	YB/1080	SC2/17972	27/01/53
YB/1033	SC2/17929	07/01/53	YB/1081	SC2/17973	27/01/53
YB/1034	SC2/17914	07/01/53	YB/1082	SC2/17976	29/01/53
YB/1035	SC2/17917	07/01/53	YB/1083	SC2/17974	29/01/53
YB/1036	SC2/17915	07/01/53	YB/1084	SC2/17975	29/01/53
YB/1037	SC2/17931	07/01/53	YB/1085	SC2/17978	29/01/53
YB/1038	SC2/17934	07/01/53	YB/1086	SC2/17980	30/01/53
YB/1039	SC2/17933	07/01/53	YB/1087	SC2/17979	30/01/53
YB/1040	SC2/17939	12/01/53	YB/1088	SC2/17981	30/01/53
YB/1041	SC2/17932	07/01/53	YB/1089	SC2/17972 or '17977	
YB/1042	SC2/17936	07/01/53			(see YB/1080)
YB/1043	SC2/17935	12/01/53			30/01/53
YB/1044	SC2/17928	12/01/53	YB/1090	SC2/17966	30/01/53
YB/1045	SC2/17938	12/01/53	YB/1091	SC2/17963	30/01/53
YB/1046	SC2/17916	12/01/53	YB/1092	SC2/17964	30/01/53

Chassis No.	Engine No.	Completion Date	Chassis No.	Engine No.	Completion Date
YB/1093	SC2/17960	02/02/53	YB/1139	SC2/18023	20/02/53
YB/1094	SC2/17984	02/02/53	YB/1140	SC2/18024	20/02/53
YB/1095	SC2/17989	02/02/53	YB/1141	SC2/18025	20/02/53
YB/1096	SC2/17990	02/02/53	YB/1142	SC2/18029	20/02/53
YB/1097	SC2/17842	02/02/53	YB/1143	SC2/18027	
YB/1098	SC2/17988	02/02/53	YB/1144	SC2/18028	
YB/1099	SC2/17987	02/02/53	YB/1145	SC2/18017	20/02/53
YB/1100	SC2/17961	02/02/53	YB/1146	SC2/18032	20/02/53?
YB/1101	SC2/17959	05/02/53	YB/1147	SC2/18033	27/02/53
YB/1102	SC2/17862 or '17962 (see YB/0982).				
		05/02/53	YB/1148	SC2/18035	20/02/53
YB/1103	SC2/17986	05/02/53	YB/1149	SC2/18034 (book entry only?)	
YB/1104	SC2/17992	05/02/53		amended to '18036.	
YB/1105	SC2/17994	06/02/53	YB/1150	SC2/18037	20/02/53
YB/1106			YB/1151	SC2/18038	20/02/53
YB/1107			YB/1152	SC2/18040	20/02/53
YB/1108			YB/1153	SC2/18044	20/02/53
YB/1109			YB/1154	SC2/18039	20/02/53
YB/1110	SC2/17995	06/02/53	YB/1155	SC2/18042	20/02/53
YB/1111	SC2/17996	06/02/53	YB/1156	SC2/18046	20/02/53
YB/1112	SC2/18000	06/02/53	YB/1157	SC2/18045	23/02/53
YB/1113	SC2/17999	06/02/53	YB/1158	SC2/18031 engine changed to	
YB/1114	SC2/17997	06/02/53		'18059 (see YB/1209).	23/02/53
YB/1115	SC2/18001	09/02/53	YB/1159	SC2/18077	09/03/53
YB/1116	SC2/17998	09/02/53	YB/1160	SC2/18043	09/03/53
YB/1117	SC2/18006	09/02/53	YB/1161	SC2/18047	09/03/53
YB/1118	SC2/18002	09/02/53	YB/1162	SC2/18049	24/02/53
YB/1119	SC2/18034	19/02/53	YB/1163	SC2/18041	24/02/53
YB/1120	SC2/18004	19/02/53	YB/1164	SC2/18051	24/02/53
YB/1121	SC2/18005	19/02/53	YB/1165	SC2/18050	25/02/53
YB/1122	SC2/18003	19/02/53	YB/1166	SC2/18048	25/02/53
YB/1123	SC2/18008	19/02/53			
YB/1124	SC2/18011 engine changed to SC2/18030 (see YB/1168).				
		19/02/53			
YB/1125	SC2/18010	19/02/53	YB/1167	SC2/18054	25/02/53
YB/1126	SC2/18007	19/02/53	YB/1168	SC2/18011 (see YB/1124).	
YB/1127	SC2/18009	13/02/53			27/02/53
YB/1128	SC2/18015	13/02/53	YB/1169	SC2/18055	27/02/53
YB/1129	SC2/18013	13/02/53	YB/1170	SC2/18056	27/02/53
YB/1130	SC2/18014	13/02/53	YB/1171	SC2/18053	27/02/53
YB/1131	SC2/18016	13/02/53	YB/1172	SC2/18052	
YB/1132	SC2/18012	13/02/53	YB/1173	SC2/18061	27/02/53
YB/1133	SC2/18021	13/02/53	YB/1174	SC2/18058	27/02/53?
YB/1134	SC2/18019	13/02/53	YB/1175	SC2/18060	
YB/1135	SC2/18020	13/02/53	YB/1176	SC2/18057	04/03/53
YB/1136	SC2/18018	20/02/53	YB/1177	SC2/18065	04/03/53
YB/1137	SC2/18026	20/02/53			
YB/1138	SC2/17934 (book entry only?) amended to '18022 (see YB/1038).				
		20/02/53			

## REGISTER NEWS

Rob Silk of Linne in the Netherlands has been checking up on the "Y" Types in that country and has come up with one not previously known to us: Y/3758. This is a 1949 car and belongs to a [REDACTED] of Buchten. It has been allocated No.1299 on the Register (will we make the 1300 by next issue?).

Rob also tells me that YB/1379 (Register No.44) has now moved from the Netherlands to Belgium, where it is in the ownership of a [REDACTED].

---

### *More Nostalgia..... From 20 years ago.....*

**Y**ET another Register in the making!  
J. G. Lawson of [REDACTED], wants to start a Register for Y-type MGs. "For top long now I believe that this elegant sports saloon has been regarded as a Cinderella. It may be of interest that the High Wycombe area is rich in Y-types, there being five in the town that I know of, including my own!"

This is the letter that gave rise to it all! It appeared in Jonathan Wood's "Trees" column in the January 1978 issue of "Thoroughbred & Classic Cars". I immediately went down to W.H.Smith's in High Wycombe's High Street and bought a dozen copies. The response to the mention was overwhelming and I will be eternally indebted to Jonathan Wood for giving me my "start".