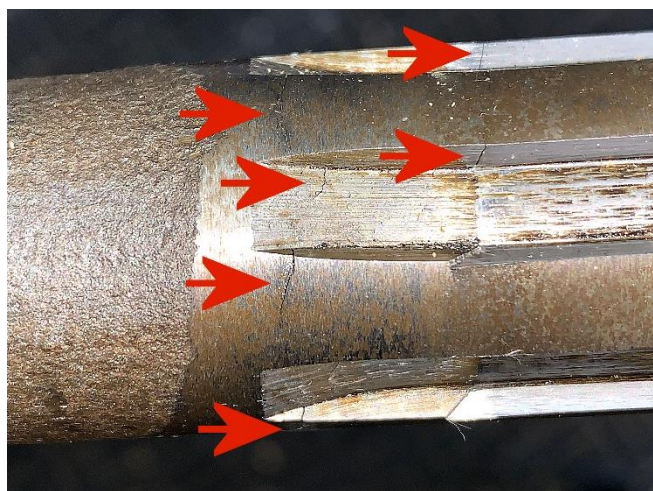


PHONE, AXLE, AND DUMB LUCK

Like most of us, I take a bunch of cell phone photos and/or videos of MG parts and locations when I remove them for repair. I usually send some to MG “experts” when I have a problem. You would be surprised the number of times that I diagnose the problem just by looking at the pictures closeup.



Well, the ultimate “photo diagnosis” happened this week while I was disassembling Jo Ann’s TF to replace brake shoes and axle seals. I took photos of parts including both ends of the axle shafts.

I looked closely at the photos. YIKES – the end of one axle was cracked where it goes into the differential. Dumb luck ... if I had photographed the other side of the axle, then I wouldn’t have seen the cracks.

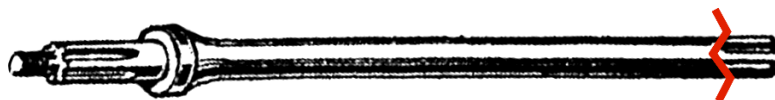
Are cracks bad? YES. It’s not unusual for this end of an axle to break without warning. Often from revving the engine and dumping the clutch. The result is devastating. Bits and pieces of broken steel fly all through the ring, pinion, and gears. Must disassemble, fish out the pieces, and replace mangled gears.



Photo by Tom Lange

I ordered new axles and nuts from Tom Lange, who is known for making the best MG axles in the world. He shipped them the same day. He said that he had never heard of a cracked axle discovered before it breaks. “Better lucky than good!”

<https://mgtrepair.net/>



The morals

- 1) Take plenty of photos and videos of your works in progress.
- 2) Proactively inspect for potential problems before it’s too late.

- Lonnie Cook, rev 23-May-2024